

Agenda Item: 6.

Memorandum

To: PPO Subcommittee
From: Amanda Grint, Water Resources Engineer
Date: August 4, 2011
Re: Glacier Creek Wetland/Stream Mitigation Bank Design Contract Amendment #1

The Glacier Creek property was purchased by the District and UNO in June 2009 and is shown in the attached map. In April 2010, a professional services contract was approved with HWS for design of the Glacier Creek stream and wetland mitigation bank for a not to exceed fee of \$106,800. Since that time HWS has merged with Alfred Benesch & Company creating a name change although the individuals working on the project remain the same.

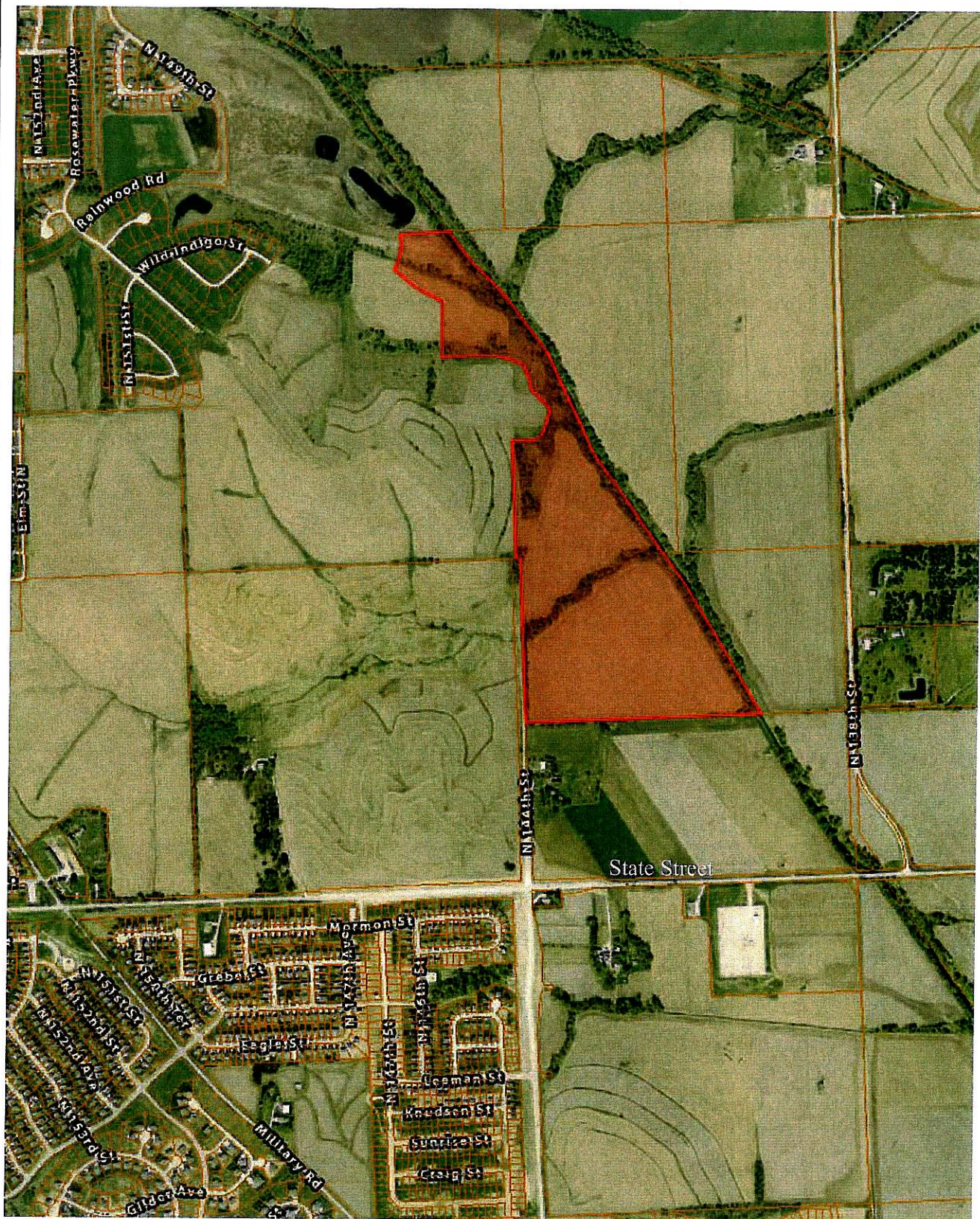
The initial scope of services was prepared based on a conceptual design that focused on gaining stream mitigation credits by splitting the current flow into two channels and creating additional linear feet of stream channel. During the US Army Corps of Engineers (USACE) review process with the Interagency Review Team (IRT) it was determined that utilizing the new stream assessment tool developed by the Omaha District USACE would not only be beneficial to the District but would be recommended by the IRT. Based on findings from the stream assessment, a new concept was developed to restore the existing channels rather than create new stream channel.

This proposed amendment details the additional scope necessary to carry the revised concept for the Glacier Creek mitigation bank through the final design phase. The proposal includes changes to the original scope Tasks 1, 2, 4, 5 and 6 and the major changes are listed below:

- Additional Project Management and involvement at the Glacier Creek dedication ceremony
- Revision of the concept to submit to the IRT and additional coordination with IRT
- Revised preliminary design and plans

The total cost of the amendment for the Glacier Creek stream and wetland mitigation bank design is \$26,463.23 bringing the total to a not to exceed fee of \$133,264.00.

Staff recommends that the Subcommittee recommend to the Board that the General Manager be authorized to execute the proposed Professional Services Agreement Amendment #1 between the District and Alfred Benesch & Company for the Glacier Creek stream and wetland mitigation bank project, bringing the total not to exceed contract amount to \$133,264, subject to changes deemed necessary by the General Manager and approval as to form by District Legal Counsel.



Glacier Creek Mitigation Bank



Printed: Aug 04, 2011

www.dcgis.org/dogis



Alfred Benesch & Company
14748 W. Center Road, Suite 200
Omaha, NE 68144-2029
www.benesch.com
P 402-333-5792
F 402-333-2248

August 2, 2011

Papio-Missouri River Natural Resources District
Attn: Ms. Amanda Grint, P.E.
8901 S. 154th Street
Omaha, NE 68138-3621

RE: Glacier Creek Wetland/Stream Bank Project

Dear Ms. Grint:

Benesch has been working with the Papio-Missouri River Natural Resources District (NRD) over the past year to develop conceptual layouts and preliminary designs for the restoration of Glacier Creek and an un-named tributary to the Big Papillion Creek. This work involved developing the conceptual layouts and presenting those layouts to the NRD, University of Nebraska- Omaha (UNO) and the Corps of Engineers (Corps). The NRD, UNO and Corps then provided Benesch feedback and suggestions on the concept layouts. This input was integrated into concept layout revisions and then into the preliminary design efforts.

Initially the project concentrated on splitting the flow of Glacier Creek into two separate channels with two let down structures to outlets into the Big Papillion Creek. Benesch took a preferred conceptual layout of the split flow into preliminary design. Preliminary design consisted of performing hydraulic analysis, sizing drainage structures and performing water budgets.

Recently we were informed the Corps is no longer open to the concept of splitting the flow into two separate defined channels and wants the restoration project to be a single channel. In light of this, we have developed a new concept layout with a single channel restoration and adjacent wetlands components. This concept utilizes a low water crossing at the Western (upstream) end of the restored Glacier Creek and a single let down structure at the Eastern (downstream) end. We have now taken this concept to the preliminary design phase. We have completed a major portion of the preliminary design for this concept layout. There are still some more wetlands layout required. We are in the process of modeling the grading for this concept. After this is completed we can proceed to the final design phase.

This change in design and additional services previously requested by the PMRNRD for the UNO dedication resulted in the following out of scope work for Task 1, 2, 4, 5 and 6. Table 1 provides a break down for each task by hours and fee either used or proposed.

Ms. Amanda Grint, P.E.
August 2, 2011
Page Two

Table 1. Glacier Creek Wetland Bank Design Out of Scope for Each Task.

Task	Additional hours	Additional Fee (\$)
Task 1-Kick-off Meeting	23.5	2,589.50
Task 2- Data Collection	32.3	3,007.23
Task 4- Conceptual Plan Development	7.7	544.50
Task 5- Wetland Bank Instrument Approval	22.7	2,500.00
Task 6-Preliminary Design	187.6	17,822.00

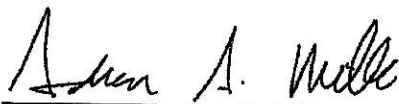
The additional effort described above to complete the project is anticipated to require the following contract fee adjustment:

Current Contract Not- To- Exceed Fee = \$106,800
Requested Amendment = \$26,463.23

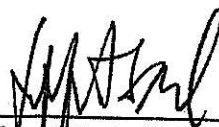
Proposed Amended Contract Hourly Not-To-Exceed Fee = \$133,263.23

Please acknowledge your acceptance of the Amendment Scope and Fee By signing in the signature block provided below and returning one copy to this office for our records
If you have any questions, please contact me at 402-333-5792.

Sincerely,



Andrew Miller
Project manager



Jeffery A. Sockel, P.E.
Vice President

Accepted By Papio-Missouri River NRD

Amanda Grint, P.E.
Project Manager

Date

Revised Concept

